

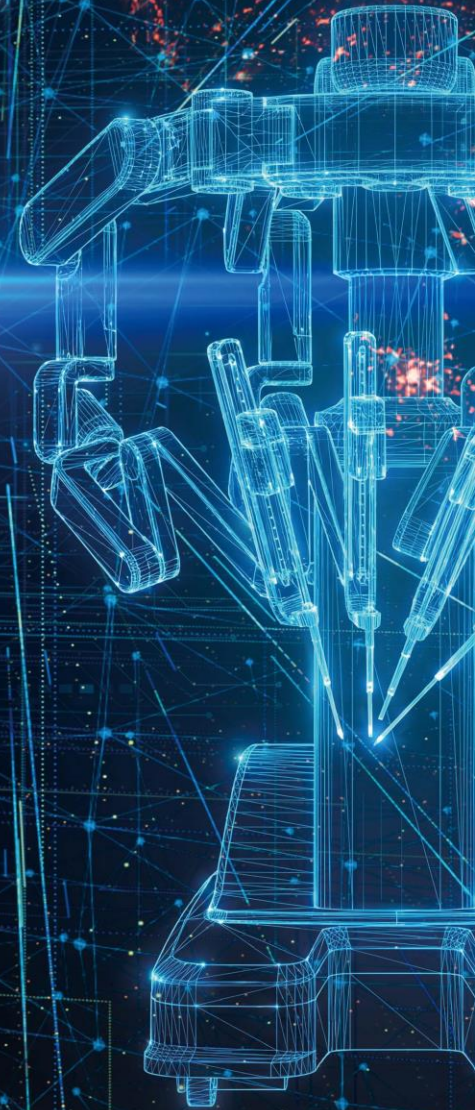


**MEDBOT™**  
微创机器人

**2025**

# Annual Results Presentation

March 2026



# Disclaimer

This document is for information purposes only and does not constitute or form part of any offer or invitation to sell or the solicitation of an offer or invitation to purchase or subscribe for any securities of Shanghai MicroPort MedBot (Group) Co., Ltd., and no part of it shall form the basis of, or be relied upon in connection with, any agreement, arrangement, contract, commitment or investment decision in relation thereto whatsoever.

## FORWARD-LOOKING STATEMENTS

Some information contained in this presentation contains forward-looking statements. These forward-looking statements include, without limitation, those regarding our future financial position, our strategy, plans, objectives, goals and targets, future developments in the markets where we participate or are seeking to participate, and any statements preceded by, followed by or that include the words “believe”, “intend”, “expect”, “anticipate”, “project”, “estimate”, “predict”, “is confident”, “has confidence” and similar expressions are also intended to identify forward-looking statements. Such statements are based upon the current beliefs and expectations of MedBot’s management and are subject to significant risks and uncertainties. of Shanghai MicroPort MedBot (Group) Co., Ltd. undertakes no obligation to update any of the statements. These forward-looking statements are not guarantees of future performance and are subject to risks, uncertainties and other factors that could cause actual future results to differ materially from current expectations include, but are not limited to, general industry and economic conditions, PRC governmental policies and regulations relating to the medical device manufacturing industry, competition in the medical device manufacturing industry, our ability to develop new products and stay abreast of market trends and technological advances, our goals and strategies, our ability to execute strategic acquisitions of, investments in or alliances with other companies and businesses, fluctuations in general economic and business conditions in China and other countries that of Shanghai MicroPort MedBot (Group) Co., Ltd. operates in.

## CONFIDENTIALITY

This presentation is confidential and may not be reproduced, redistributed or passed on, directly or indirectly, to any other person or published, in whole or in part, for any purpose.

# AGENDA

▶ **Business Highlights**

**Product Pipeline Update**

**Financial Review**

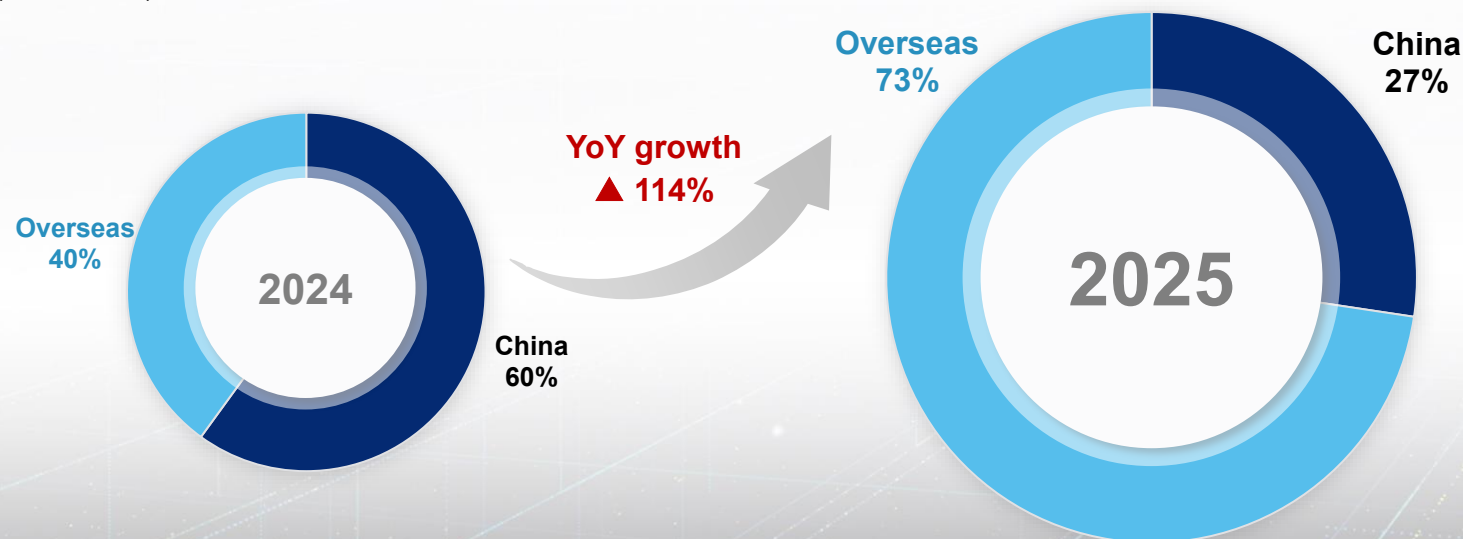
**Appendix**

# Financial Highlights

<p>Revenue</p> <p><b>¥ 551.1mn</b></p> <p><b>+114% YoY</b> overseas market RMB400mn, <b>+287% YoY</b></p>	<p>Net Loss</p> <p><b>¥ 254.1mn</b></p> <p><b>Narrowed 61% YoY</b> Adj Net Loss RMB165mn, <b>- 66% YoY</b></p>	<p>Free Cash Outflow</p> <p><b>¥ 62.8mn</b></p> <p><b>Improved 84% YoY</b> <b>Achieved cash inflow in 2H25</b></p>
---	--	--

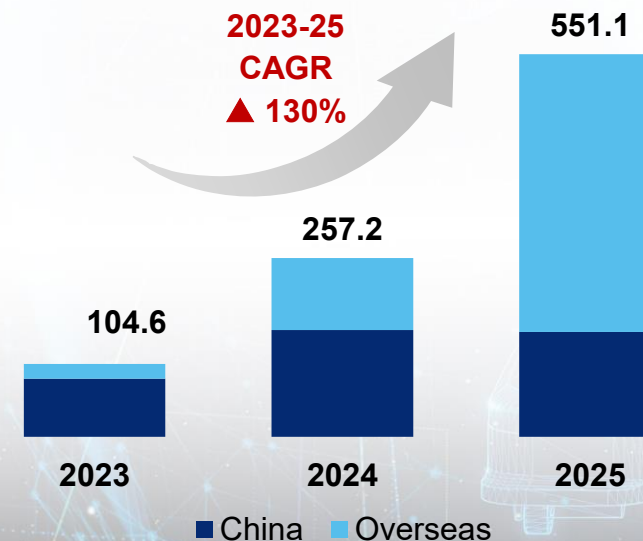
## Revenue by geographical area

(RMB million)

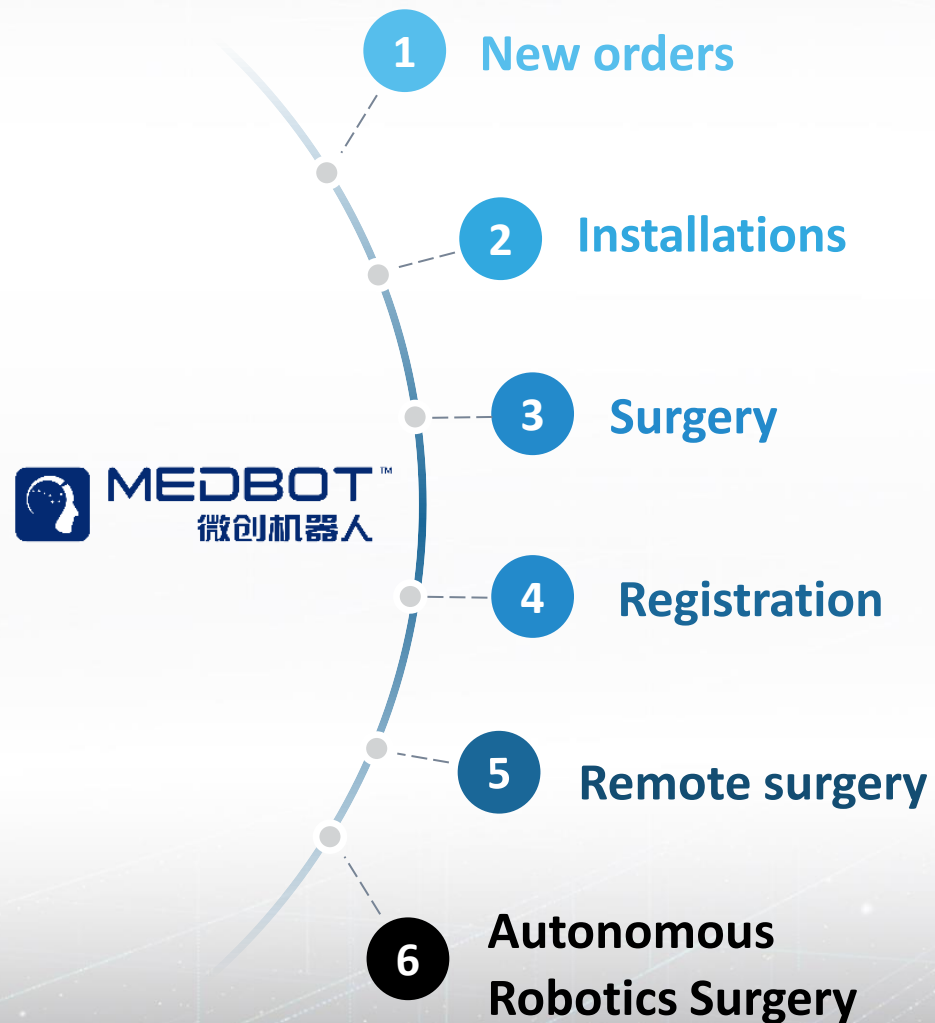


## 2023-25 Revenue Growth

(RMB million)



# Business Highlights



<p><b>~300</b> orders</p> <p>accumulatively for product portfolio</p>	<p><b>+220 units</b> Toumai®</p> <p>&gt;100 new orders in 2025</p>	<p><b>65+ units</b> SkyWalker™</p>
<p><b>~200</b> units</p> <p>installed for product portfolio</p>	<p><b>&gt;140 units</b> Toumai®</p> <p>80 units newly installed in 2025</p>	<p><b>&gt;50 units</b> SkyWalker™</p>
<p>Sales of instrument of 2025</p> <p><b>~6x</b> of 2024</p> <p>~12% of total Toumai® sales</p>	<p><b>230+</b> procedures completed per unit of Toumai® in stable phase</p>	<p><b>1200+</b> operations completed as the highest single center</p>
<p><b>Toumai®</b> obtained approval in ~40 countries/regions in 2025, accumulated <b>60+</b> approvals</p>	<p><b>SkyWalker™</b> accumulatively obtained approval from ~20 countries/regions</p>	<p><b>UniPath™</b> obtained <b>NMPA</b> approval</p>
<p><b>~800</b> Remote surgeries completed by Toumai®</p>	<p><b>1st</b> globally approved remote surgical robot</p> <p><b>10+ approvals</b> obtained</p>	<p><b>1st</b> FDA-IDE approved remote surgery globally</p>
<p>Developed and published <b>MicroGenius®</b> Multimodal Autonomous LLM</p>		<p>The world's <b>1st</b> animal experiment of autonomous surgery powered by large models</p>

# Business Highlights

## Deepening Global Market Penetration with Strong Growth Momentum

### Global Approvals

**Toumai** Hope of Life **60+** overseas approvals  
**10+** approvals for remote surgery

**Sky Walker** **~20** overseas approvals

### Global Market Orders (as of Mar 2026)

**Toumai** Hope of Life **220+** units of new orders globally  
**Top-2** brand in terms of 2025 new orders (from public statistics)  
 Covered **50+** countries, **12** countries have placed **5+** orders

**Sky Walker** **65+** units of new orders globally



### Commercialized Installation Base (as of Mar 2026)

**Toumai** Hope of Life  
 China: **46**  
 Overseas: **94**

**Sky Walker**  
 China: **9**  
 Overseas: **41**

■ Toumai®   ■ SkyWalker™   ■ Both   📍 Key overseas training center

- More products with overseas regulatory approvals
- Synergy with MicroPort for global commercialization
- Increased academic influence on an international scale
- Recognition from experts around the world

## Accelerating Large-scale Surgeries across Products and Continents



### Surgical procedures

#### Toumai®

- ✓ Maintained **No.1** in terms of clinical operations among domestic brands
- ✓ Completed **230+** procedures per unit of commercially installed Toumai® in the stable operation phase

#### SkyWalker™

- ✓ Assisted with **3,000+** TKA procedures accumulatively
- ✓ Covered **100+** hospitals in China and **50+** hospitals in Europe, US, Japan etc

#### R-ONE®

- ✓ **800+** PCI operations completed globally
- ✓ 40+ operations via remote surgery
- ✓ Globally **1st 5G remote PCI clinical trial** in 2025



### Case studies



#### Shanghai Pulmonary Hospital

Toumai® assisted in 1,200+ surgeries since installation in 2024



**Prof. Zhang Xiaoshen** from the First Affiliated Hospital of Jinan University and **Prof. Cai Nian** from Centro Hospitalar Conde de São Januário completed world's 1st cross-boarder complicated cardiac remote surgery



#### Clinique Ain Diab Littoral in Morocco

Completed 400+ cases, as the first medical institution in Morocco to install surgical robot



#### AZORG Hospital in Belgium

Completed 250 surgeries and performed Europe's first remote surgery.



#### Doctors Hospital & Medical Center in Pakistan

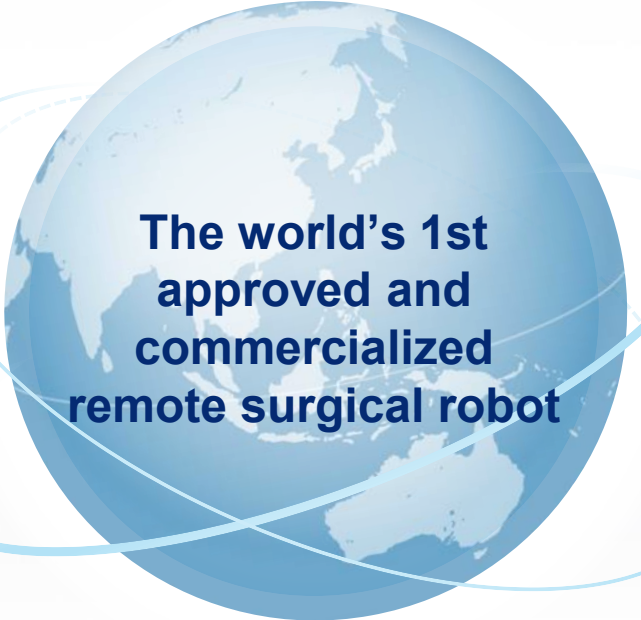
Completed 200+ cases in less than 1 year since installation



#### SkyWalker in Germany

Krankenhaus Nettetal in Germany has successfully completed 500+ Robot-assisted TKA, leading in the global industry

# World's 1<sup>st</sup> Approval – Ushering the Surgical Robot Industry into the Remote Era



**Ruijin Hospital** - A five-location remote surgery conducted for patients in Sanming (Fujian), Diqing (Yunnan), Ruijin (Jiangxi), Boao (Hainan) and Jiading (Shanghai)

**World's 1<sup>st</sup> satellite-based robotic telesurgery** and the first remote surgery performed via low Earth orbit (LEO) satellite

**European 1st remote surgery** conducted successfully in Belgium with assistance from Toumai®

**World's 1<sup>st</sup> transcontinental ultra-long-distance robot-assisted liver cancer resection surgery**, on SRS 2025

The world's **1st FDA IDE-approved** clinical remote tele-surgery trial conducted 10 cases - Among the **Medical Breakthroughs 2025** by ABC News

**Latin America's 1st commercial remote surgery** completed in Brazil

**~800**  
Complex remote surgeries

**100%**  
Surgery success rate

**60+**  
National/world records

**20+**  
Countries/regions

**10+**  
Registrational approvals

**~50%**  
of world's population covered

# World's First and Only Company Approved across All Five Major Surgical Specialties

## Toumai®

Obtained approvals in ~40 countries/regions in 2025

Accumulatively 60+ countries/regions approved in total

Obtained CE mark for Pediatric Surgery



## Toumai® Single-port

Approved by NMPA in Feb 2025

Approved by MOHAP (UAE)



## Toumai® Remote

Approved in 10+ countries or regions, including China, India, and Brazil etc. covering ~50% of global population



## SkyWalker™

Accumulatively obtained approvals from ~20 countries/regions

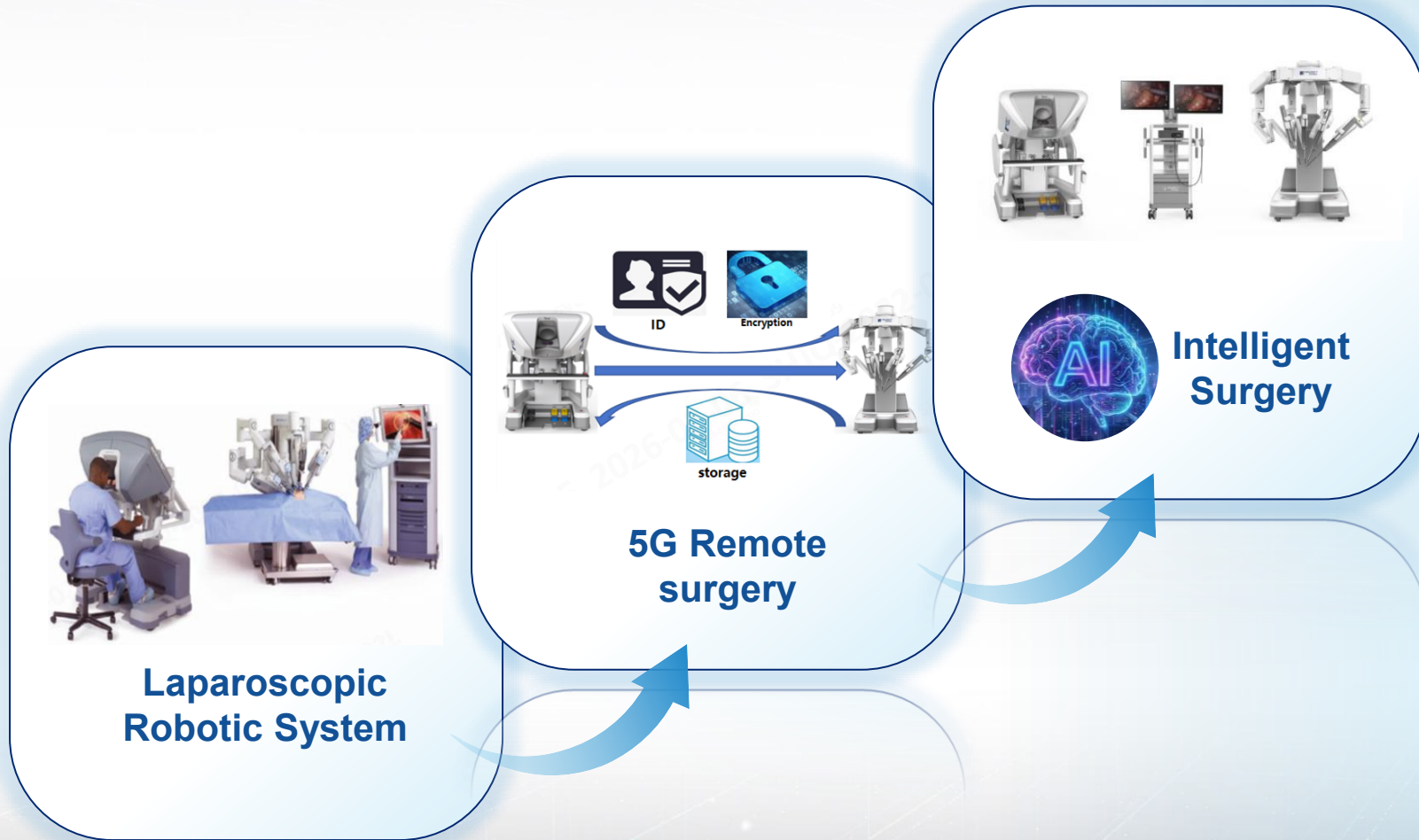


## UniPath™

Obtained NMPA approval in Dec 2025



## Pioneering the Paradigm Shift in AI-integrated Intelligent Surgery



### World's First

Successfully completed the **world's first animal trial** of AI-powered Autonomous Surgery, powered by **MicroGenius®** Multimodal Autonomous surgical model



### Full-process Autonomy

Marks a new stage where autonomous surgery technology moved from **"fragmented assistance"** to **"full-process autonomy"**



### High Success Rate

The success rate of local operation steps in the trial reached **88%**, with real-time autonomous dynamic adjustment and **one-time overall success**

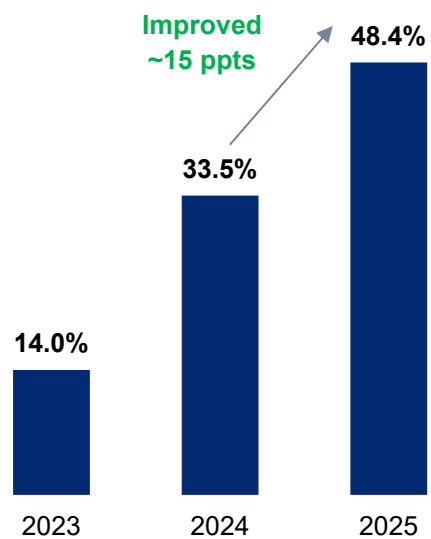


### Innovative Dual-layer Architecture

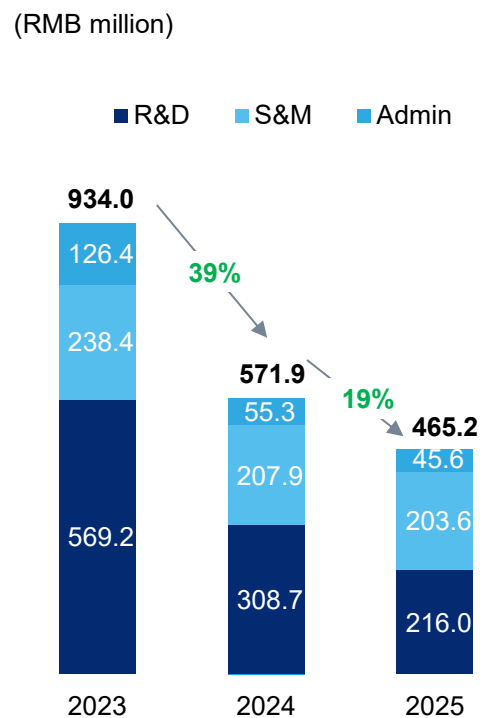
**HL+LL Dual-Layer** Intelligent Architecture achieves the perfect separation of "decision-making" and "execution", ensuring both the intelligence of surgical strategies and the precision of operational execution

## Continued Operational Effectiveness Improvement

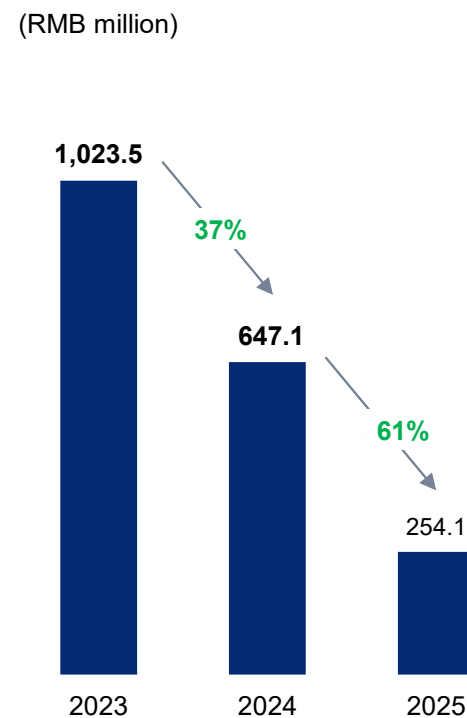
### Gross profit Margin



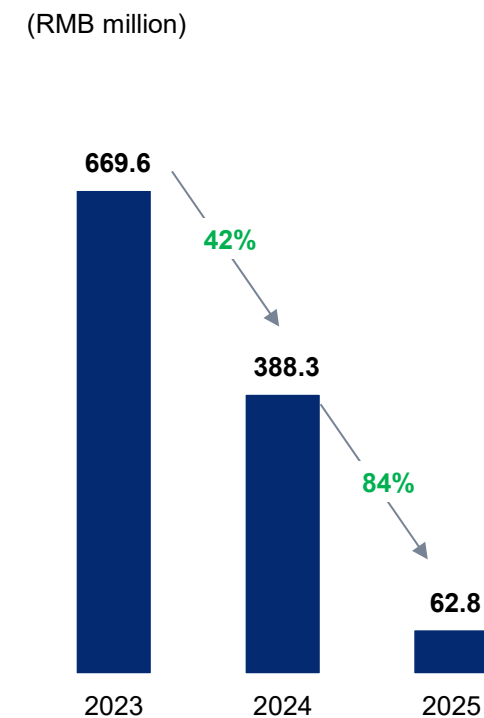
### Optimizing Operational Efficiency



### Net Loss Narrowed



### Free Cash Outflow Decreased



# AGENDA

**Business Highlights**

 **Product Pipeline Update**

**Financial Review**

**Appendix**

## Comprehensive product offering covering all 5 major and fast-growing surgical specialties

Surgical Specialty	Product	Indicated Application	Medical Device	Design Development	Design Validation	Clinical Trial/ Clinical Evaluation	Registration Application	
			Product Classification					
Self-development	Laparoscopic Surgery	Toumai® (图迈®) Laparoscopic Surgical Robot	Urologic surgery	III (Green Path)	[Progress bar]			[Award]
			Gynecologic surgery	IIb (CE)	[Progress bar]			[Award]
			Thoracic surgery		[Progress bar]			[Award]
			General surgery		[Progress bar]			[Award]
		Toumai® (图迈®) Remote Laparoscopic Surgical Robot	Urologic, Gynecologic, Thoracic and General Surgery	III	[Progress bar]			[Award]
	Toumai® (图迈®) Single-port Laparoscopic Surgical Robot	Urologic, Gynecologic and General Surgery	III	[Progress bar]			[Award]	
	DFVision® (蜻蜓眼®) 3D Electronic Laparoscope	Laparoscopy (fluorescence imaging function)	II (Green Path)	[Progress bar]			[Award]	
	Orthopedic Surgery	SkyWalker™ (鸿鹄®) Orthopedic Surgical Robot	Total knee arthroplasty	II (FDA)	[Progress bar]			[Award]
				IIb (CE)	[Progress bar]			[Award]
				III (Green Path)	[Progress bar]			[Award]
III				[Progress bar]			[Award]	
III				[Progress bar]			[Award]	
Natural Orifice Surgery	UniPath™ (独道®) Electronic Bronchoscopic Surgical Robot	Trans-bronchial diagnosis & treatment	III	[Progress bar]			[Award]	
			III	[Progress bar]			[Award]	
			III	[Progress bar]			[Award]	
Panvascular Surgery	R-ONE® Panvascular Surgical Robot	Coronary angioplasty	III	[Progress bar]			[Award]	
			III	[Progress bar]			[Award]	
Percutaneous Surgery	iSR'obo® Mona Lisa Robotic Transperineal Prostate Biopsy System	Transperineal prostate biopsy	III	[Progress bar]			[Award]	

Note:

1. Approved in 60+ countries/regions, incl. Brazil, Ecuador, Taiwan, Malaysia, Thailand, Philippines, Morocco, South Africa, Türkiye, Jordan, Serbia, Uzbekistan, Belarus, Switzerland, UK etc [Award] NMPA approval [Award] FDA / CE approval [Award] Other regions' approval

2. Approved in 10+ countries/regions, incl. India, Brazil, Argentina etc [Award]

3. Approved in ~20 countries/regions, incl. Brazil, Australia, India, Japan, UK, Canada, Thailand [Award]

## Flagship product– Toumai® Laparoscopic Surgical Robot

**Globalization Footprint**

**Commercialization breakthrough**

- Obtained **100+ units** of new order in overseas market in 2025, accumulatively **~170 units** of order up to date, Covered **50+ countries/regions**
- Achieved **60+ units** of overseas commercial installation in 2025, accumulated **94 units** installed by Mar 2026

**Regulation approval milestone**

- 1<sup>st</sup> Chinese laparoscopic surgical robot with **CE mark**
- Obtained registration approvals in **~40 countries/regions** in 2025, accumulated **60+** approvals up to date

**Increased overseas influence**

- Achieved installation of multi-port & single-port at **Cleveland Clinic Abu Dhabi**
- SRS 2025** – 26 academic events, 3 live/record remote surgery broadcasts, 22 speeches

**Pioneer in domestic brands**

**Domestic Leader with premium quality demonstrated in large-scale clinical validation**

- Maintained **leading position, #1 market share** among domestic brands with ramped up winning bids and commercial installation:
  - ~20 units** of new orders in domestic market in 2025, **50+ units** up to date
  - 46 units** of commercial installation by Mar 2026
- >90%** installed in Grade IIIA hospitals: Zhongshan Hospital, 301 hospital, West China Hospital
- Large volume surgery: **No.1 among domestic brands; 230+ procedures** completed per unit of Toumai® in stable phase

**#1 Remote Surgical Robot**

**Leading global surgical robot into the Remote Era**

- Obtained the world's **1st registration approval for remote surgical robot**
- Obtained approvals in **10+ countries/regions**, covering nearly **half of world's population**
- ~800** remote clinical surgeries, 100% success rate, across **20+ countries**, created **over 60** records of 1<sup>st</sup> remote surgery in China and globally
- Completed the world's **1st remote surgery approved by FDA-IDE**, from US to Angola
- 1st and only intercontinental remote surgery network**
- Initiated the 3<sup>rd</sup> generation of remote surgery technology – **Robotic satellite remote surgery**

### Multiple generations of Toumai® clinical progress

Toumai® 1st Generation	2018	Completed the design for Toumai® 1st Generation
	2018	Admitted to NMPA Green Path
	May 2021	The first Chinese-developed surgical robot that had completed registrational clinical trial for complex urologic surgeries
	Jan 2022	Obtained NMPA approval
Toumai® 2nd Generation	Jun 2022	Completed the world's longest-range 5G tele-robotic surgery
	Oct 2021	Initiated patient enrollment for registrational clinical trial in gynecologic, thoracic and general surgeries
	Jan 2022	Completed enrollment for multidisciplinary, multicenter-registered clinical trials
	Oct 2023	Obtained NMPA approval
	May 2024	Received CE Mark
Toumai® Single-port	Aug 2024	Received NMPA approval for new features and enhancements
	Apr 2025	Received world's 1st approval for remote surgery
	Feb 2023	Commenced enrollment of registrational clinical trials
	Jan 2024	Completed enrollment of registrational clinical trials
	Feb 2025	Obtained NMPA approval

## Flagship product – SkyWalker™ Orthopedic Surgical Robot

The 1<sup>st</sup> domestic surgical robot to expand into global market



Continued decent global commercialization trend

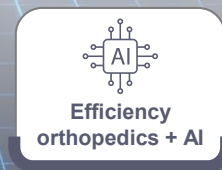
- **65+ orders** in total up to date
- **20+ new orders** received in 2025
- **50+ units** of global installation base
- (20+ new installed units in 2025)
- **3000+** Clinical operations
- **100+ hospitals** in China and abroad
- One of the six orthopedic surgical robots **recommended by NICE UK**



Providing complete clinical total solution



Steady upgrade in product capability



## UniPath™ Electronic Bronchoscopic Surgical Robot



.....  
**NMPA approval**



Leverage the power of flexible robotics which uses a camera and tools to enter the lungs through their natural airways



Precisely guide a biopsy instrument to those hard-to-reach nodules

### Strong Market Demand



- **High incidence of Lung cancer:** >1million cases per annum



- **Low early diagnosis rate:** ~19%



- **Low 5-year survival rate:** <20%

### Key Milestones

**Mar 2022**

Completed FIM clinical trial – First trial surgery completed by domestic trans-bronchial surgical robot

**Dec 2025**

Obtained the NMPA approval

**Since from 2026**

To kick off the commercialization

### Cutting-edge Tech Exploration



- World's 1st 5G Remote "Autonomous Driving" Robotic Bronchoscopic Cryoablation animal study



## R-ONE® Vascular Interventional Robot System



- NMPA approval
- CE mark



Designed to operate with precision and perform specific movements



Facilitate and enhance the interventional procedures performed on the patient

### Clinical Performance & Leading 5G Application

- July 2023** Completed first 5G tele-robot PCI operation in human across 2800 km
- Feburery 2024** **Headlines made on Bangladesh's national news** successful tele-robot PCI operation on complex cases
- Up to date** Completed **800+** PCI operations and **50+** remote procedures

### Strong Commercialization Momentum

-  • **6 units** of new installation in 2025, for top hospitals in China, accumulatively 7 units installed
-  • The rapid commercialization process reflects **good product performance and great market potential**

### Unique Synergy advantages



- Synergy with the cardiovascular business of MicroPort Group
- Which will substantially facilitate the commercialization of R-ONE®



- Leading application of tele-robot remote PCI operation

## Mona Lisa Robotic Transperineal Prostate Biopsy System



- NMPA Approval
- FDA Approval
- CE Marking
- TGA Approval
- HAS Approval



Real-time ultrasound images displayed on the monitor during the biopsy procedure



The surgeon manually inserts the needle into the prostate to collect the biopsy cores

### Unique Competing Advantage



1<sup>st</sup> commercially placement in 2023



Obtained NMPA approval in May 2023 - 1<sup>st</sup> transperineal prostate biopsy robot certified in the field of urology in China



#### Leading technology

- Accurate and efficient conduction
- Improve the positive detection rate
- Reduce manual error and omission

### Unmet Market Demand



Prostate biopsy market demand



Transperineal prostate biopsy<sup>1</sup>



More than 20,000 clinical applications worldwide

Note: <sup>1</sup> A diagnostic procedure in which the surgeon passes the biopsy needle through the perineal skin and into the prostate

### Unique Synergy Advantages



To cooperate with Toumai<sup>®</sup>, providing integrated diagnose and treatment solutions in urology



1<sup>st</sup> prostate cancer treatment globally through combination of prostate biopsy surgical robot and cryoablation platform

Prostate biopsy surgical robot

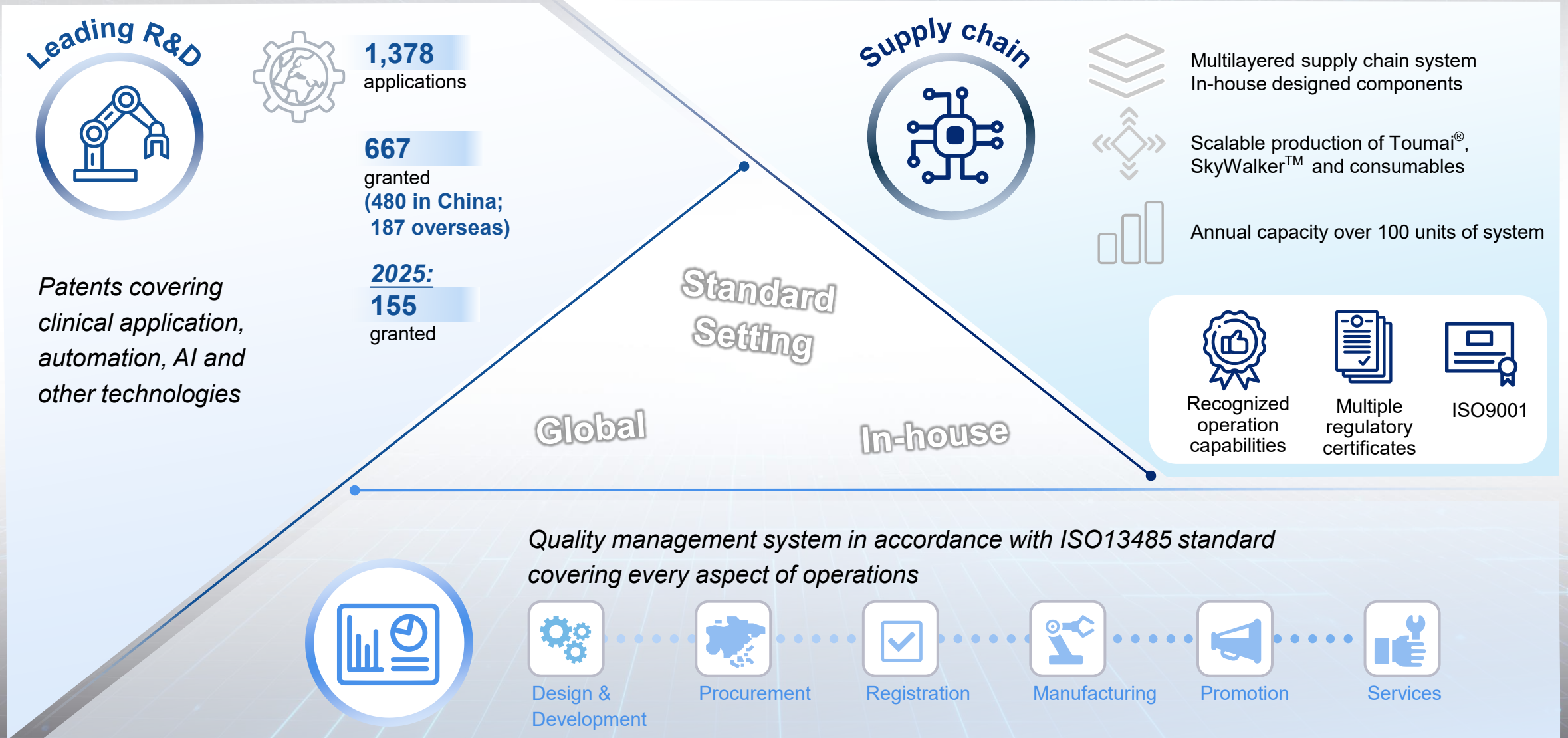


Cryoablation platform



南京鼓楼医院  
南京大学医学院附属鼓楼医院  
Nanjing Drum Tower Hospital

## Strong industrial operation capabilities for surgical robots



# AGENDA

**Business Highlights**

**Product Pipeline Update**

**▶ Financial Review**

**Appendix**

# Financial Review

## Consolidated Financial Performance

### REVENUE

Revenue reached RMB551m, up 114% YoY. Overseas markets became our core growth engine, with Toumai® sales surging to over five times last year, reflecting our brand recognition and robust global sales network. Meanwhile, we continued to optimize the product sales mix, with our flagship orthopedic robot maintaining steady growth and R-One contributing incremental revenue.

### TOTAL NET LOSS

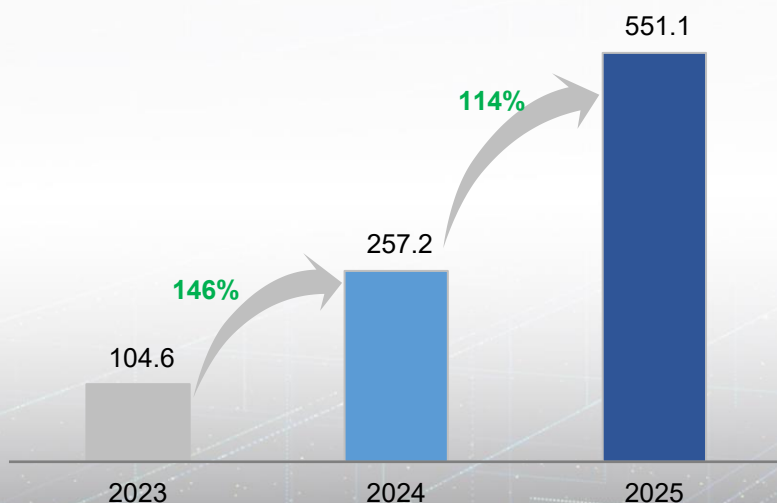
Total net loss narrowed from 647.1m for the year ended 31 December 2024 to 254.1m for the current year. The adjusted net loss also decreased to 165.0m. The great decrease is primarily driven by (i) the increase in revenue and the improvement of gross profit margin; (ii) the decrease in operating expenses due to the focus on core product R&D and the improvement in R&D and operational efficiency; (iii) the decrease in impairment losses on equity-accounted investments.

### FREE CASH FLOW

The successful implementation of revenue growth, strategic focus, and cost reduction and efficiency enhancement measures led to a continued narrowing of net free cash outflow.

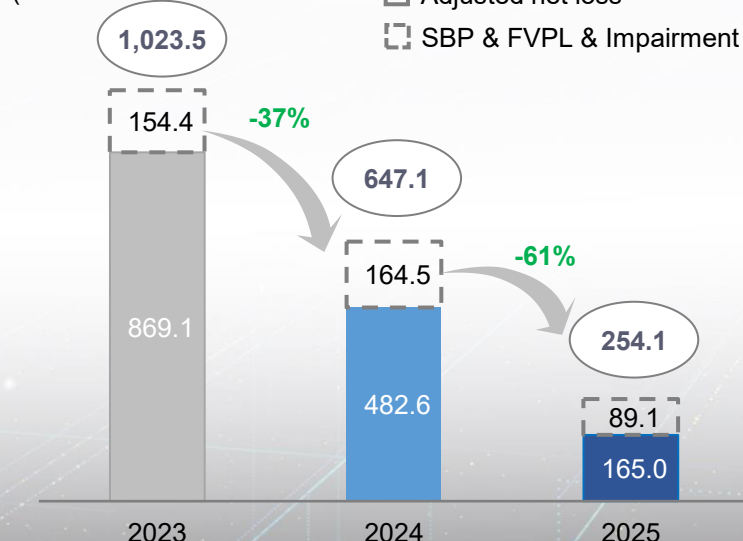
#### Overseas Engine, Global Scale

(RMB million)



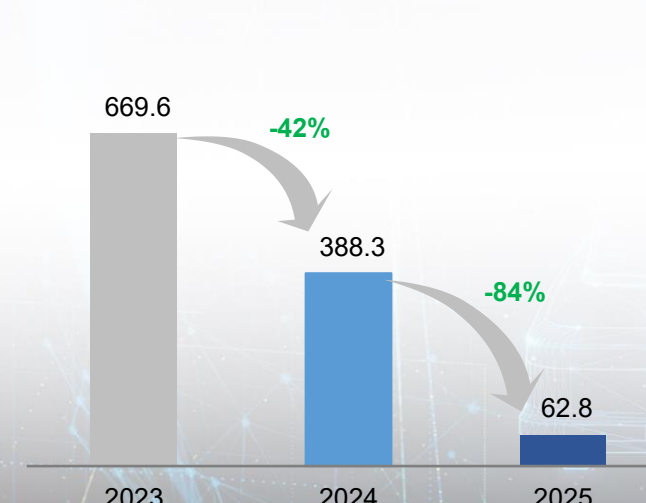
#### Productivity improvement

(RMB million)



#### Cash-flow management

(RMB million)

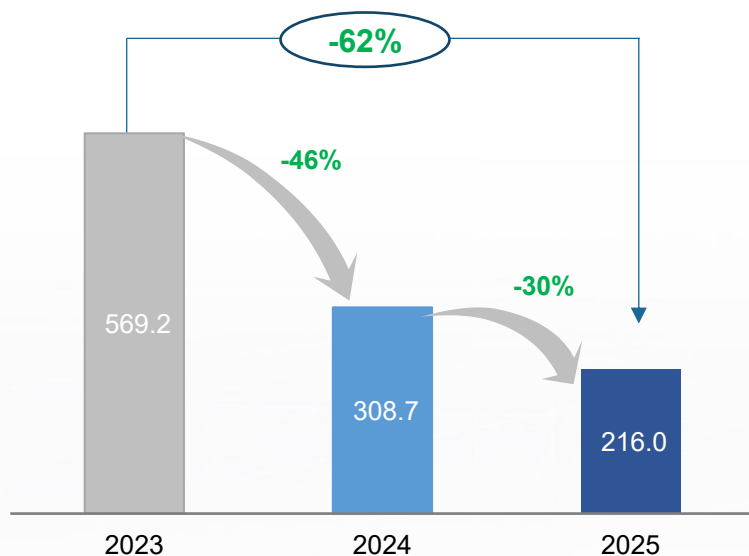


\* Adjusted net loss as a non-HKFRS measure has eliminated potential impacts of certain items that do not affect our ongoing operating performance.

## Operating Expenses

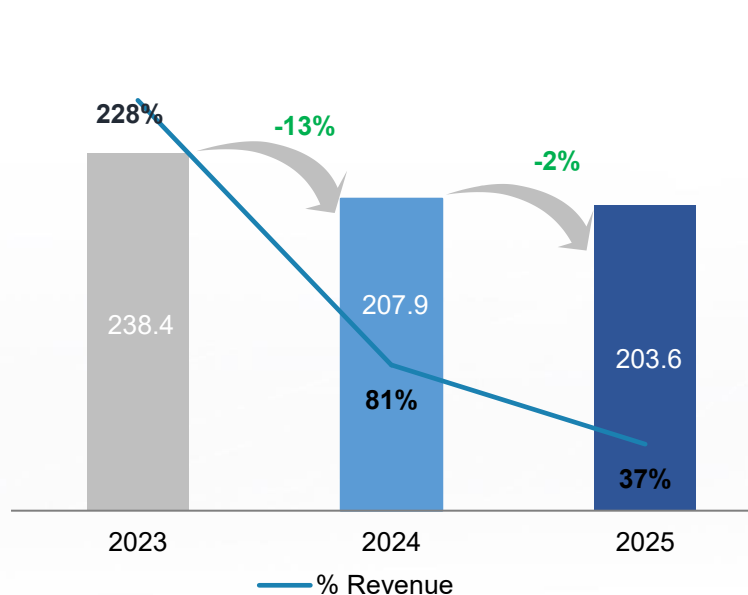
### R&D COST

(RMB million)



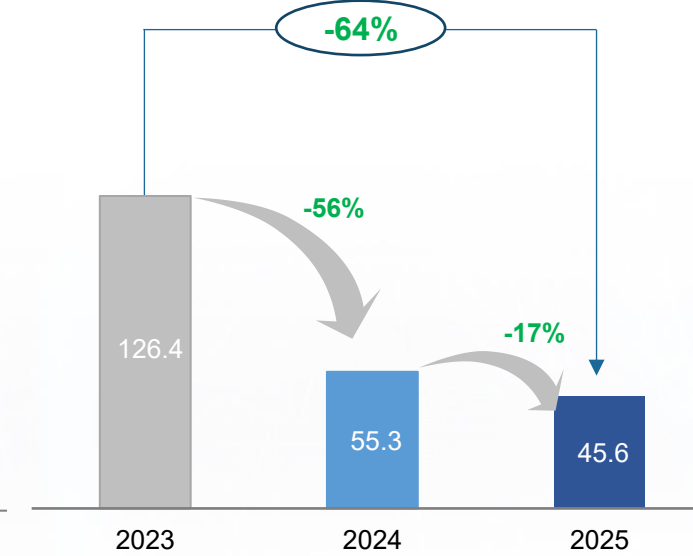
### S&M EXPENSES

(RMB million)



### ADMINISTRATIVE EXPENSES

(RMB million)



#### R&D 216.0m, 30% decline YoY

The decrease was primarily due to the concentration on the R&D of product pipeline near the stage of commercialization and the improvement on R&D efficiency.

#### S&M 203.6m, 2% decline YoY and supporting 114% growth of revenue

As a percentage of revenue, sales expenses dropped significantly from 81% last year to 37% this year. Domestically, we enhanced efficiency and reduced costs; overseas, we leveraged MPSC's sales resources, resulting in a relatively limited increase in investment.

#### G&A 45.6m, decreased by 17% YoY

The continuous reduction of administrative expenses was attributed to the Company's long-term commitment to improving operational efficiency, effectively reducing labor costs by streamlining the management functional team and strictly controlling other administrative expenses.

# In Closing



We **delivered record revenue** and robust momentum to drive continuous growth



We enjoy large, **global market opportunities**



Our comprehensive product pipeline **enables** technology integration, **stimulates** sales synergy, and **provides** integrated diagnostic and treatment solutions



We are **positioned for financial improvement** based on the good foundation established by our cost reduction and efficiency improvement initiatives



Our premium product quality, innovation ability **earned the trust of our clients and industry experts**

# AGENDA

**Business Highlights**

**Product Pipeline Update**

**Financial Review**

 **Appendix**

# Appendix I - Consolidated Balance Sheet

Unit: RMB'000	31 Dec 2025	31 Dec 2024	Var.	Unit: RMB'000	31 Dec 2025	31 Dec 2024	Var.
<b>Non-current assets</b>				<b>CAPITAL AND RESERVES</b>			
Property, plant and equipment	172,751	297,371	-42%	Share capital	1,031,330	1,006,194	2%
Intangible assets	2,374	3,972	-40%	Reserves	(620,656)	(727,992)	-15%
Goodwill	-	1,482	-100%				
Trade receivables	21,364	2,579	728%	<b>Total equity attributable to equity shareholders of the Company</b>	<b>410,674</b>	<b>278,202</b>	<b>48%</b>
Equity-accounted investees	14,741	11,887	24%				
Financial assets measured at FVPL	49,444	67,054	-26%	Non-controlling interests	(10,749)	(20,524)	-48%
Other non-current assets	38,320	38,148	0%				
<b>Total Non-current assets</b>	<b>298,994</b>	<b>422,493</b>	<b>-29%</b>	<b>TOTAL EQUITY</b>	<b>399,925</b>	<b>257,678</b>	<b>55%</b>
<b>Current assets</b>							
Inventories	131,687	151,481	-13%				
Trade and other receivables	263,762	92,835	184%				
Pledged deposits	3,833	-					
Cash and cash equivalents	636,317	612,230	4%				
<b>Total Current assets</b>	<b>1,035,599</b>	<b>856,546</b>	<b>21%</b>				
<b>Current liabilities</b>							
Interest-bearing borrowings	28,792	245,223	-88%				
Trade and other payables	312,333	201,476	55%				
Contract liabilities	65,508	8,718	651%				
Lease liabilities	19,103	34,511	-45%				
Provisions	24,453	13,529	81%				
<b>Total Current liabilities</b>	<b>450,189</b>	<b>503,457</b>	<b>-11%</b>				
<b>Non-current liabilities</b>							
Interest-bearing borrowings	360,258	389,312	-7%				
Contract liabilities	43,935	12,527	251%				
Lease liabilities	2,426	22,281	-89%				
Deferred income	77,463	93,147	-17%				
Provisions	397	637	-38%				
<b>Total Non-current liabilities</b>	<b>484,479</b>	<b>517,904</b>	<b>-6%</b>				
<b>NET ASSETS</b>	<b>399,925</b>	<b>257,678</b>	<b>55%</b>				

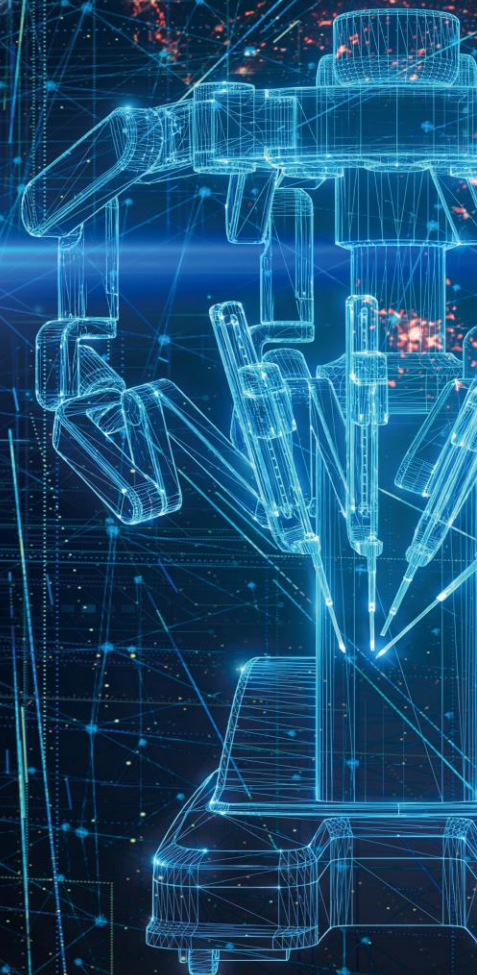
## Appendix II - Consolidated P&L

Unit: RMB'000	2025	2024	Var.
<b>Revenue</b>	551,069	257,249	114%
<b>Cost of sales</b>	(284,447)	(171,029)	66%
<b>Gross profit</b>	<b>266,622</b>	<b>86,220</b>	<b>209%</b>
Other net income/(loss)	12,270	(3,168)	-487%
Selling and marketing expenses	(203,608)	(207,934)	-2%
Administrative expenses	(45,637)	(55,282)	-17%
Research and development costs	(215,982)	(308,725)	-30%
Net (loss)/gain on financial instruments carried at fair value through profit or loss ("FVPL")	(17,610)	138	-12861%
Impairment losses on property, plant and equipment and goodwill	(31,316)	-	
<b>Loss from operations</b>	<b>(235,261)</b>	<b>(488,751)</b>	<b>-52%</b>
Finance costs	(19,809)	(21,639)	-8%
Share of profits less losses of equity-accounted investees	(1,040)	(20,244)	-42%
Reversal of/(provision for) impairment loss on an equity-accounted investee	1,995	(116,467)	-102%
<b>Loss before taxation</b>	<b>(254,115)</b>	<b>(647,101)</b>	<b>-61%</b>
Income tax			
<b>Loss for the year</b>	<b>(254,115)</b>	<b>(647,101)</b>	<b>-61%</b>
<b>Attributable to:</b>			
Equity shareholders of the Company	(249,660)	(642,406)	-61%
Non-controlling interests	(4,455)	(4,695)	-5%
<b>Loss for the year</b>	<b>(254,115)</b>	<b>(647,101)</b>	<b>-61%</b>
<b>Loss per share (RMB)</b>			
Basic and diluted (RMB)	(0.24)	(0.66)	-64%



MEDBOT™  
微创机器人

THANK YOU



微创机器人  
(服务号)



MedBot Surgical  
(订阅号)